

# 粵港深度合作園(慶盛樞紐區塊)規劃深化

DESIGN REFINEMENT OF IN-DEPTH COOPERATION ZONE AMONG  
HONG KONG - GUANGDONG IN QINGSHENG HUB CLUSTER

## 湾区的边界: 粵·港社區合作與創新

PLANNING COOPERATION AND INNOVATION ON THE GBA BORDER



港式社區二期  
CONNECT TO HK  
STYLE COMMUNITY II

慶盛大道 QINGSHENG AVENUE

南華工貿學校  
NANHUA INDUSTRY &  
TRADE SCHOOL

規劃站  
PLANNED STATION

創智路  
INNOVATION AVE

創智廣場  
INNOVATION  
SQUARE

生活區高街  
HIGH STREET

南門戶  
SOUTH GATEWAY

港人子弟學校  
SCHOOL FOR HK  
CHILDREN

慶盛高鐵站TOD綜合體  
QINGSHENG HSR STATION TOD COMPLEX

社區商業中心  
COMMUNITY RETAIL CENTER

大學路  
UNIVERSITY AVE.

規劃站  
PLANNED STATION

境外來粵居民  
辦事中心  
GIC

創智三角  
KNOWLEDGE TRIANGLE

大學廣場  
UNIVERSITY  
SQUARE

攜手港科大創建“科教研創”新模式  
融合粵港資源、驅動科技創新、激發知識轉化

## 打造創新型零碳國際知識社區

CREATING THE NEW GENERATION OF  
A ZERO-CARBON INTERNATIONAL KNOWLEDGE COMMUNITY  
WITH INTEGRATED REGIONAL RESOURCES,  
TECHNOLOGICAL CREATION AND INNOVATION PRACTICE

主校門  
MAIN GATEWAY

香港科技大學(廣州)  
HKUST (GZ)

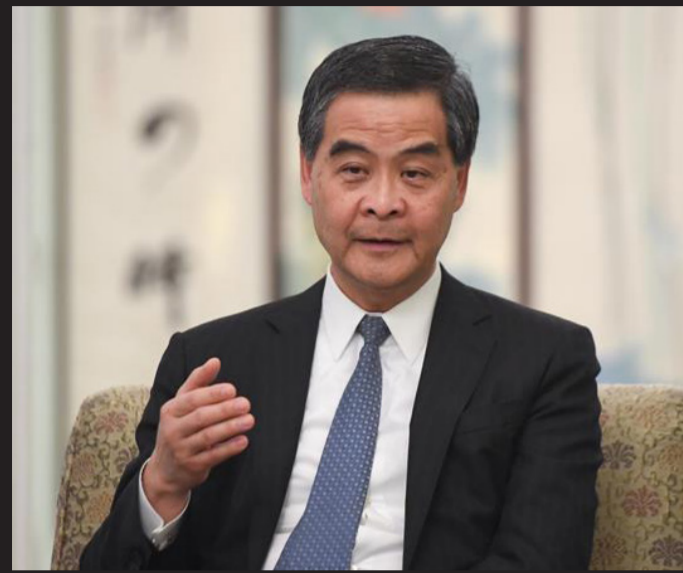
東涌站連廊  
BRIDGE CONNECTION TO  
DONGCHONG STATION

地鐵4號線東涌站  
DONGCHONG STATION

© SOM

# 發揮制度邊界優勢，建設香港融入國家發展大局的物理支點

CREATE A HUB FOR HONG KONG'S INTEGRATION INTO THE OVERALL REGIONAL DEVELOPMENT



「這個香港社區，並不僅僅是香港人買了很多房地產，或是居住在一起，是一個多功能集聚的香港社區，讓香港人同聲同氣有自己習慣的港式生活，就可以更好地吸引港人前來就業創業生活。」

This Hong Kong community is not just that Hong Kong people buy a lot of real estate or live together. It is a multi-functional Hong Kong community. Let Hong Kong people share the same voice and have their own Hong Kong style life, which can better attract Hong Kong people to come to work and start a business life.

— 梁振英 LEUNG CHUN-YING



**香港團隊**  
**凌嘉勤**  
原香港規劃署署長與規劃師協會會長

李建華 梁錦程  
林家輝 劉炳章

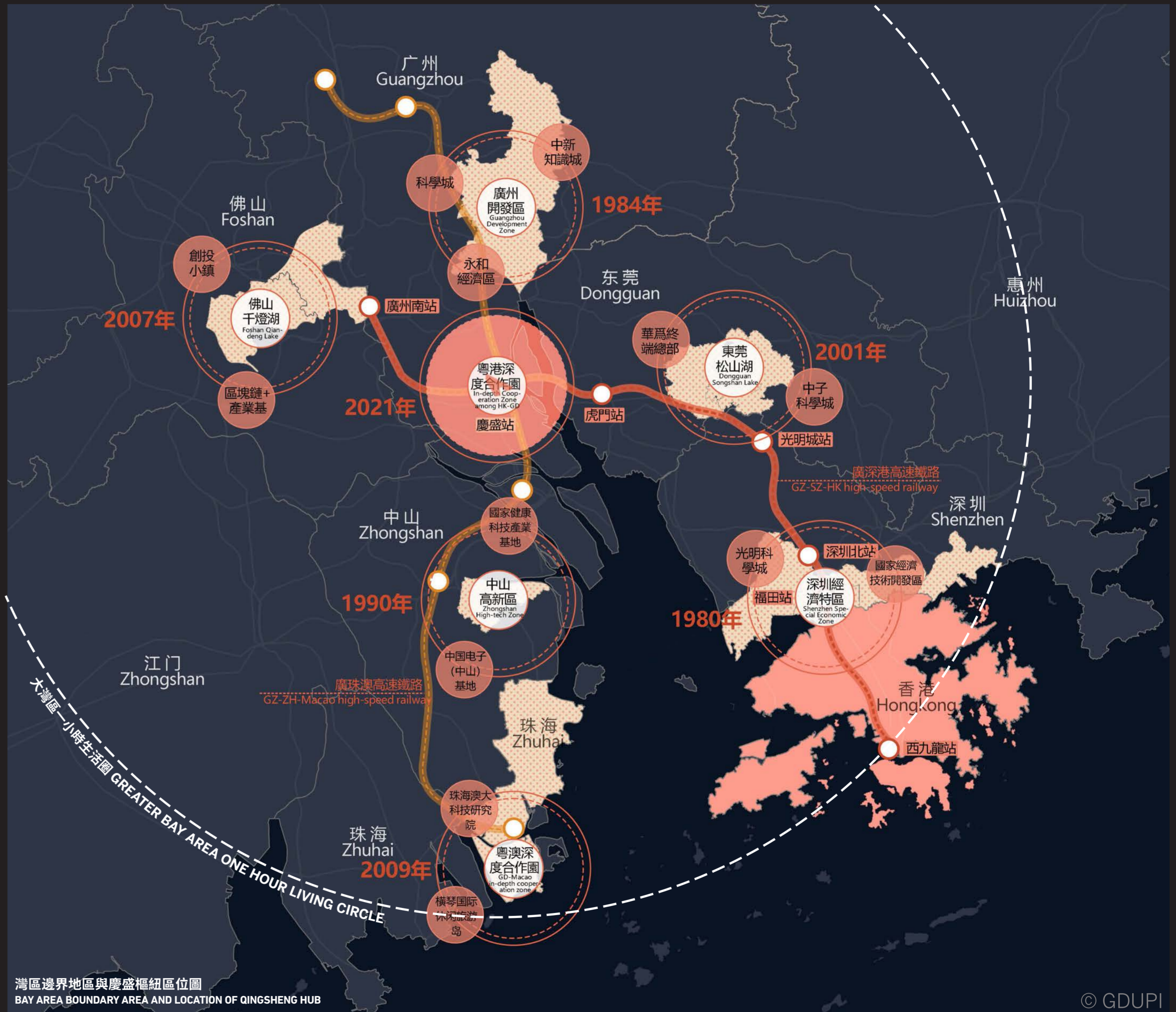
**內地團隊**  
**李曉江**  
原中國城市規劃設計研究院院長

吳超 王巍

**項目諮詢團隊**  
**PROJECT CONSULTING TEAM**

<b>馬向明</b> 周元、黎智楓、勞佩珊、黃永賢、姚丹燕、楊俊峰、黃冕眉、唐路、王飛、陳偉勁	<b>ELLEN LOU</b> 孫乃飛、舒童、LARRY CHIEN、ANDREA WONG、JOO CHO、RAN LI、SEBASTIAN GAVIRIA	<b>王斌斌</b> 張燕玲、袁藝桐
<b>羅達邦</b> 王民勤、胡閻、李啟明、張仰菲、張仰菲、唐劍鋒、壽海翔、段鈺、石雨婷、李健琪	<b>呂慶耀</b> 張文政、陳子聰、葛樂宜	<b>曾棟鴻</b> 汪超、龍家彥、熊志強、周波

2021年4月，南沙粵港合作諮詢委員會成立，其中土地發展規劃小組負責指導慶盛樞紐區域的規劃工作，支撐穗港緊密合作。  
In April 2021, Nansha Guangdong Hong Kong cooperation Advisory Committee was established, in which the land development planning group is responsible for guiding the planning of Qingsheng Hub Cluster and supporting the close cooperation between Guangzhou and Hong Kong.



## 粵港深度合作園(慶盛樞紐區域)規劃深化

DESIGN REFINEMENT OF IN-DEPTH COOPERATION ZONE AMONG HONG KONG - GUANGDONG IN QINGSHENG HUB CLUSTER

# 文化交融：塑造“港人港味”的多元活力街區

CULTURAL INTEGRATION: CREATE A DIVERSE COMMUNITY REFLECTING “HONG KONG STYLE”

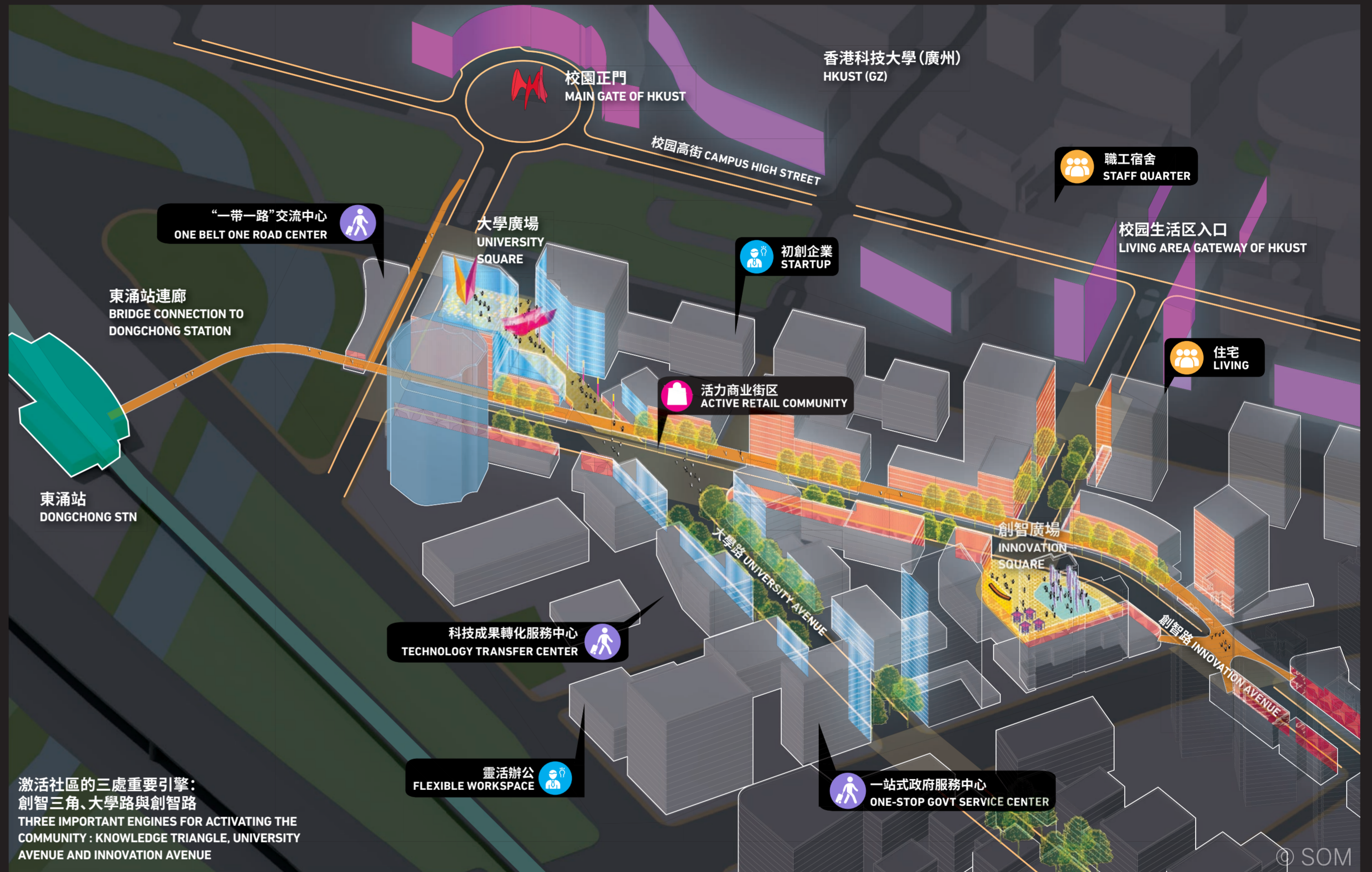
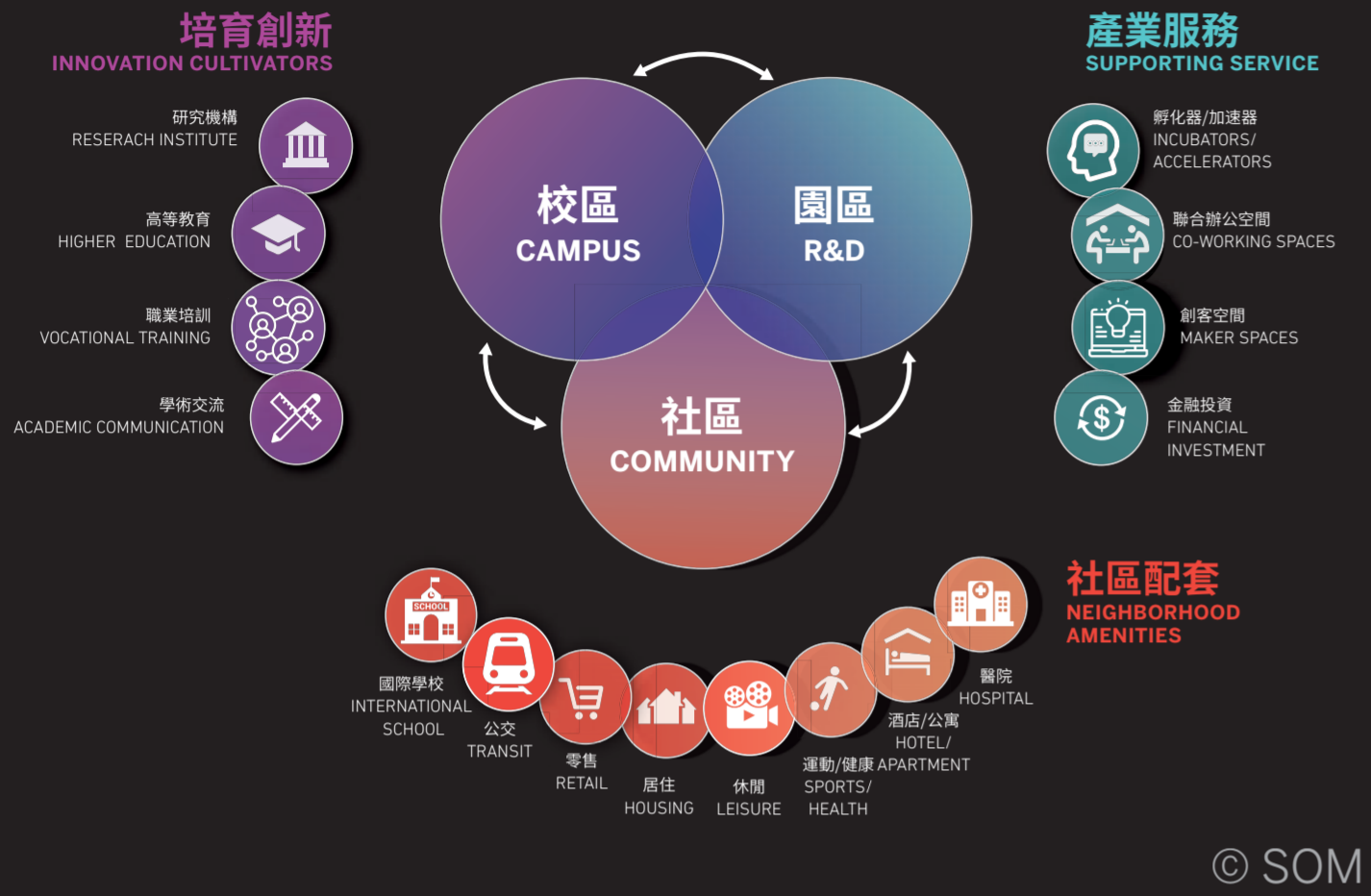


粵港深度合作園(慶盛樞紐區塊)規劃深化

DESIGN REFINEMENT OF IN-DEPTH COOPERATION ZONE AMONG HONG KONG - GUANGDONG IN QINGSHENG HUB CLUSTER

# 三區融合：汇集思想碰撞與激活多姿體驗

3 ZONE ECOSYSTEM: THE PLACE TO EXCHANGE CREATIVE IDEAS AND EXPERIENCES



## 粵港深度合作園(慶盛樞紐區塊)規劃深化

DESIGN REFINEMENT OF IN-DEPTH COOPERATION ZONE AMONG HONG KONG - GUANGDONG IN QINGSHENG HUB CLUSTER

# 服務便捷：運河通廊串聯豐富的社區生活配套

COMPREHENSIVE SERVICE : CONNECT AMENITY DESTINATIONS THROUGH ECOLOGICAL CANAL SYSTEM



香港科技大學(廣州) HKUST (GZ)

DESIGNED BY OTHERS



東涌站標誌塔樓 DONGCHONG STATION LANDMARK

© SOM



境外來粵居民辦事中心 GIC

© AECOM



創智路 INNOVATION AVE

© AECOM



港人子弟學校 HK SCHOOL

DESIGNED BY OTHERS



慶盛高鐵站TOD綜合體 QS HSR STATION TOD COMPLEX

DESIGNED BY OTHERS



- ① 香港科技大學(廣州) HKUST (GZ)
- ② 地鐵4號線東涌站 DONGCHONG STATION
- ③ 大學廣場 UNIVERSITY SQUARE
- ④ 創智廣場 INNOVATION SQUARE
- ⑤ 創智路 INNOVATION AVE
- ⑥ 大學路 UNIVERSITY AVE
- ⑦ 濱水目的地 WATERFRONT DESTINATION
- ⑧ 濱水公園 WATERFRONT PARK
- ⑨ 境外來粵居民辦事中心 GIC
- ⑩ 南華工貿學校 TECHNICAL SCHOOL
- ⑪ 港人子弟學校 HK SCHOOL
- ⑫ 慶盛高鐵站TOD綜合體 QS HSR STATION TOD COMPLEX

N  
0 200m 400m

© AECOM

## 粵港深度合作園(慶盛樞紐區塊)規劃深化

DESIGN REFINEMENT OF IN-DEPTH COOPERATION ZONE AMONG HONG KONG - GUANGDONG IN QINGSHENG HUB CLUSTER

# 綠色零碳：實現可持續發展的韌性社區

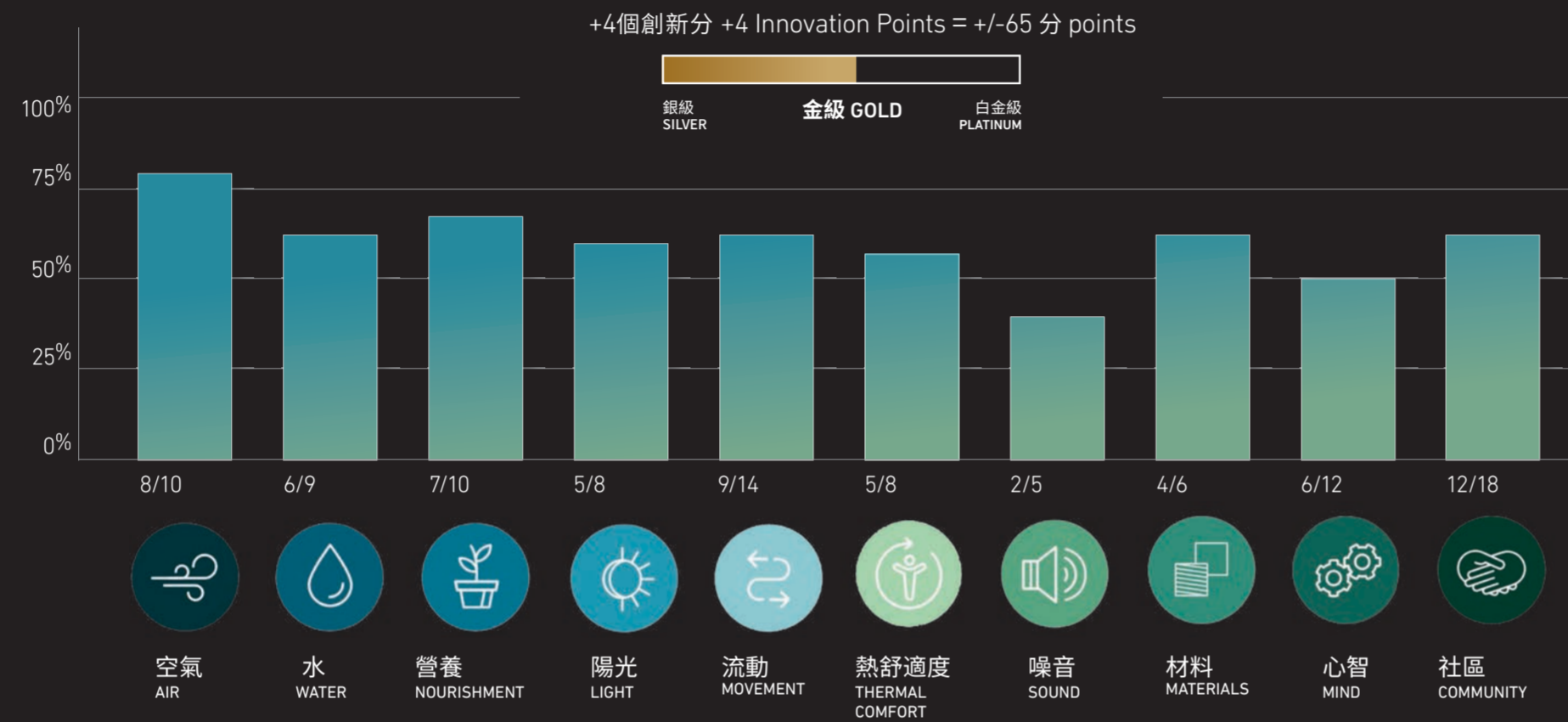
NET ZERO CARBON: SUSTAINABLE AND RESILIENT COMMUNITY STRATEGY

攜手港科大，實現地區淨零碳、提升城市抗災韌性和促進健康生活的策略

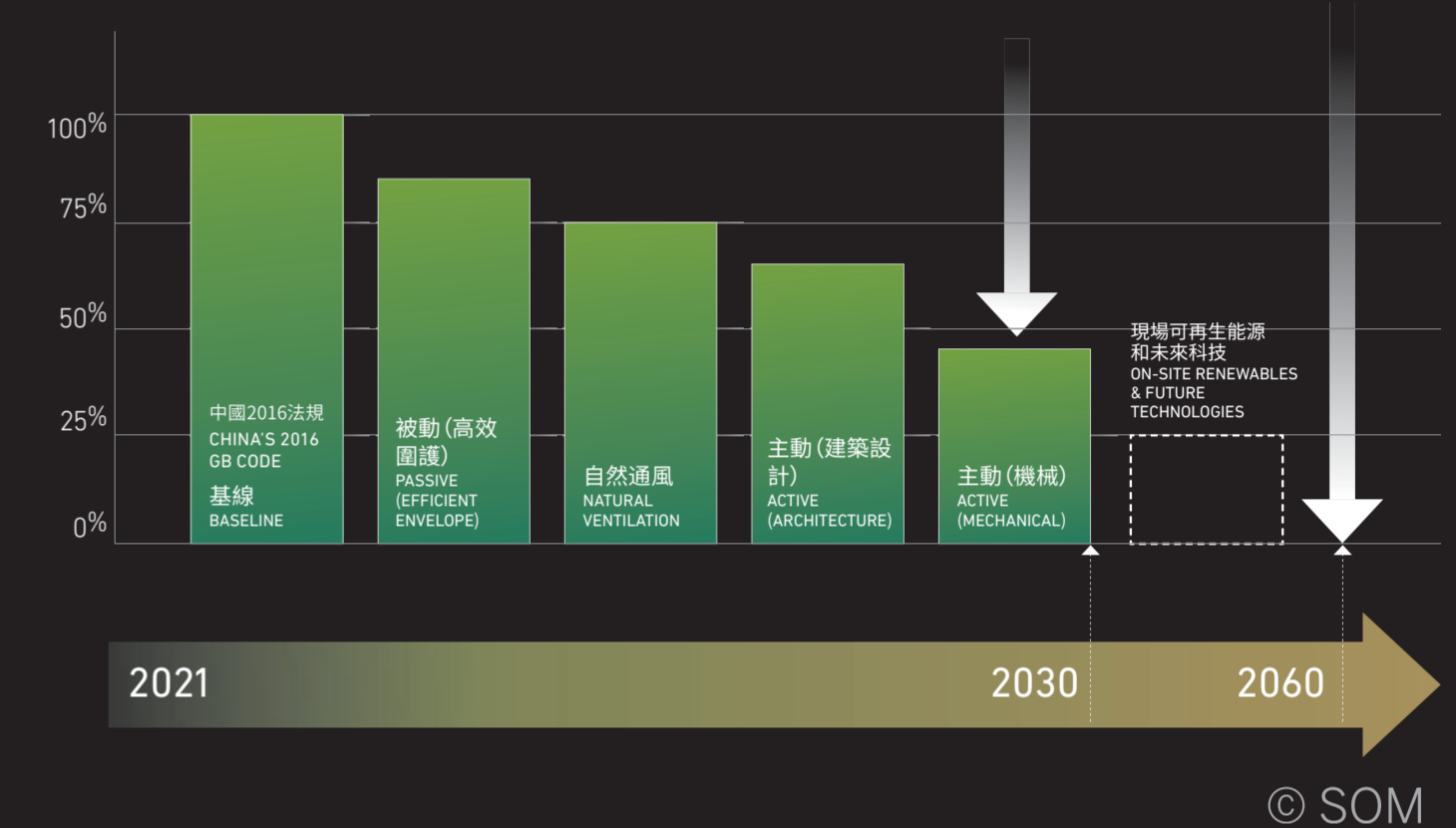
DISTRICT NET ZERO CARBON, RESILIENCE & HEALTH STRATEGIES WITH HKUST

- 慶盛健康與能源聯合區
- 被動和主動式設計
- 積極地共享資源：能源、轉廢為能等
- 協調當地綠色交通
- 減少雨水徑流
- JOINT HEALTH & ENERGY DISTRICT FOR QINGSHEN
- PASSIVE & ACTIVE DESIGN
- ACTIVE SHARING: ENERGY, WASTE TO ENERGY, ETC.
- COORDINATE LOCAL GREEN TRANSPORTATION
- REDUCE STORM WATER RUN OFF

## WELL健康社區概念 WELL COMMUNITY CONCEPTS



## 淨零運營碳 NET-ZERO OPERATIONAL CARBON



## 粵港深度合作園(慶盛樞紐區塊)規劃深化

DESIGN REFINEMENT OF IN-DEPTH COOPERATION ZONE AMONG HONG KONG - GUANGDONG IN QINGSHENG HUB CLUSTER

# 聯繫自然：弘揚南沙地方特色與生活方式

EMBRACE NATURE: CELEBRATE NANSHA'S LOCAL CULTURE AND LIFESTYLE



粵港深度合作園(慶盛樞紐區塊)規劃深化

DESIGN REFINEMENT OF IN-DEPTH COOPERATION ZONE AMONG HONG KONG - GUANGDONG IN QINGSHENG HUB CLUSTER

# “港人熟悉, 國際一流”的科創無界社區

AN INTEGRATED INTERNATIONAL KNOWLEDGE COMMUNITY THAT BRINGS NOSTALGIA FOR HONG KONGERS



## 粵港深度合作園(慶盛樞紐區塊)規劃深化

DESIGN REFINEMENT OF IN-DEPTH COOPERATION ZONE AMONG HONG KONG - GUANGDONG IN QINGSHENG HUB CLUSTER