

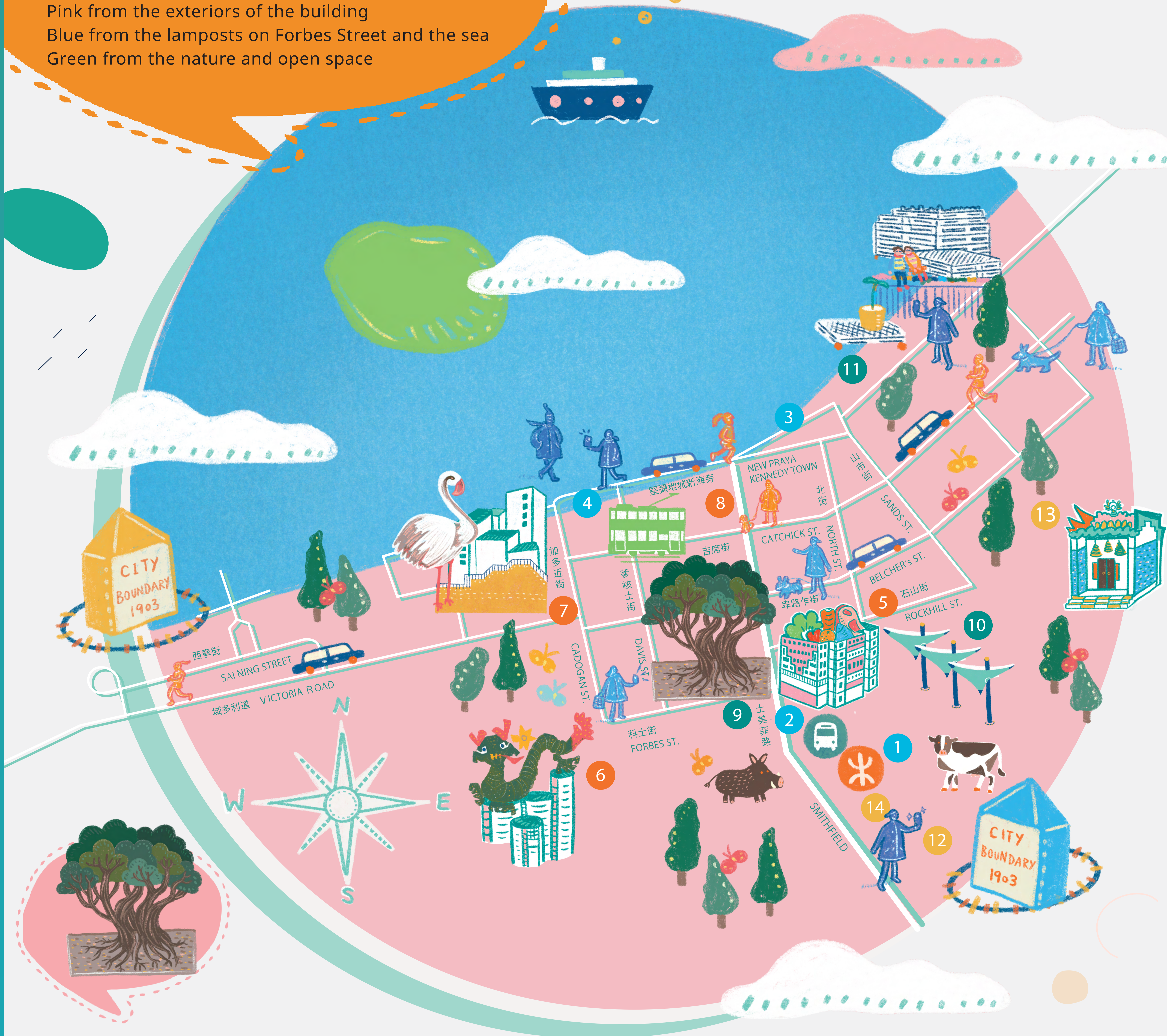
打卡位 Checkpoints

- 1 堅尼地城站 Kennedy Town MTR Station
- 2 小巴總站 Minibus Terminal
- 3 巴士總站 Bus Terminal
- 4 電車總站 Tram Terminal
- 5 士美菲路市政大廈 Smithfield Municipal Building

- 6 觀龍樓 Kwun Lung Lau
- 7 西環邨 Sai Wan Estate
- 8 美新大廈 May Sun Building
- 9 科士街樹牆 Forbes Street Wall Trees
- 10 士美菲路休憩處 Smithfield Sitting-out Area
- 11 卑路乍灣海濱長廊 Belcher Bay Promenade
- 12 界石 Boundary Stone
- 13 魯班廟 Lo Pan Temple
- 14 祥興工業大廈 Cheung Hing Industrial Building

士美菲路解碼圖以三種顏色突顯社區特色
粉紅色 - 建築物外牆 藍色 - 科士街燈柱和海洋
綠色 - 大自然和休憩空間

You will find the decoding of Smithfield in three colours
Pink from the exteriors of the building
Blue from the lamposts on Forbes Street and the sea
Green from the nature and open space



命名 Naming

Smithfield
士美菲路

士美菲路“Smithfield”經常被誤寫為“Smithfield Road”。2007年，政府曾提議將街名由中文「士美菲路」改為「士美菲路」，英文由“Smithfield”改為“Smithfield Road”，但惹來公眾反對，最終建議保留“Smithfield”，只將中文街名改寫為「士美菲路」。

Smithfield is often mistakenly written as “Smithfield Road”. In 2007, the Government suggested to make adjustments to the Chinese name of Smithfield and renaming “Smithfield” as “Smithfield Road”. The renaming has incurred community objections. As a result, “Smithfield” has been kept while changing the Chinese name.

交通 Transport



士美菲路與許多道路相交，亦是展示香港公共交通設施的縮影。
Smithfield intersects with many streets and showcases the multi-modal public transport services in Hong Kong.

大自然 Nature

士美菲路享有藍綠資源，它連繫著青翠的山丘與海濱。你可以選擇沿海濱長廊漫步，或遠足至薄扶林道親親綠蔭。士美菲路將人帶近大自然，你可以訪尋科士街臨時遊樂場，與美麗的石牆樹或花朵拍照。你可能會發現雀鳥、蜜蜂、蝴蝶、甚至野豬的蹤影。

Smithfield is bestowed with blue-green assets as it connects verdant hills with the waterfront. Let's stroll along the waterfront promenade or take a hike up to Pokfulam Road for the greens. Visit Forbes Street Temporary Playground to take selfies with the beautiful stone wall trees and flowers. You may spot birds, bees, butterflies, or even rampaging wild boars.

Visit to Hart Haus
@ Mar 2021

