

● 建築物 Buildings

士美菲路市政大廈

Smithfield Municipal Building



於1995年落成，舊時稱為「市政局士美菲路市政大廈」。該大廈的前身是堅尼地城屠房附屬的牛隻檢疫房。牛房於1986年關閉，改建為堅尼地城游泳池(已搬遷)、士美菲路街市及士美菲路市政大廈，以解決西區康樂設施短缺的問題。

Built in 1995 as the then "The Urban Council Smithfield Complex", it was formerly a cattle quarantine depot annexed to the slaughterhouse in Kennedy Town. The cattle depot was closed down in 1986 and redeveloped into Kennedy Town Swimming Pool (now relocated), Smithfield Market and Smithfield Municipal Services Building to address the shortage of recreational facilities in the Western District.

觀龍樓

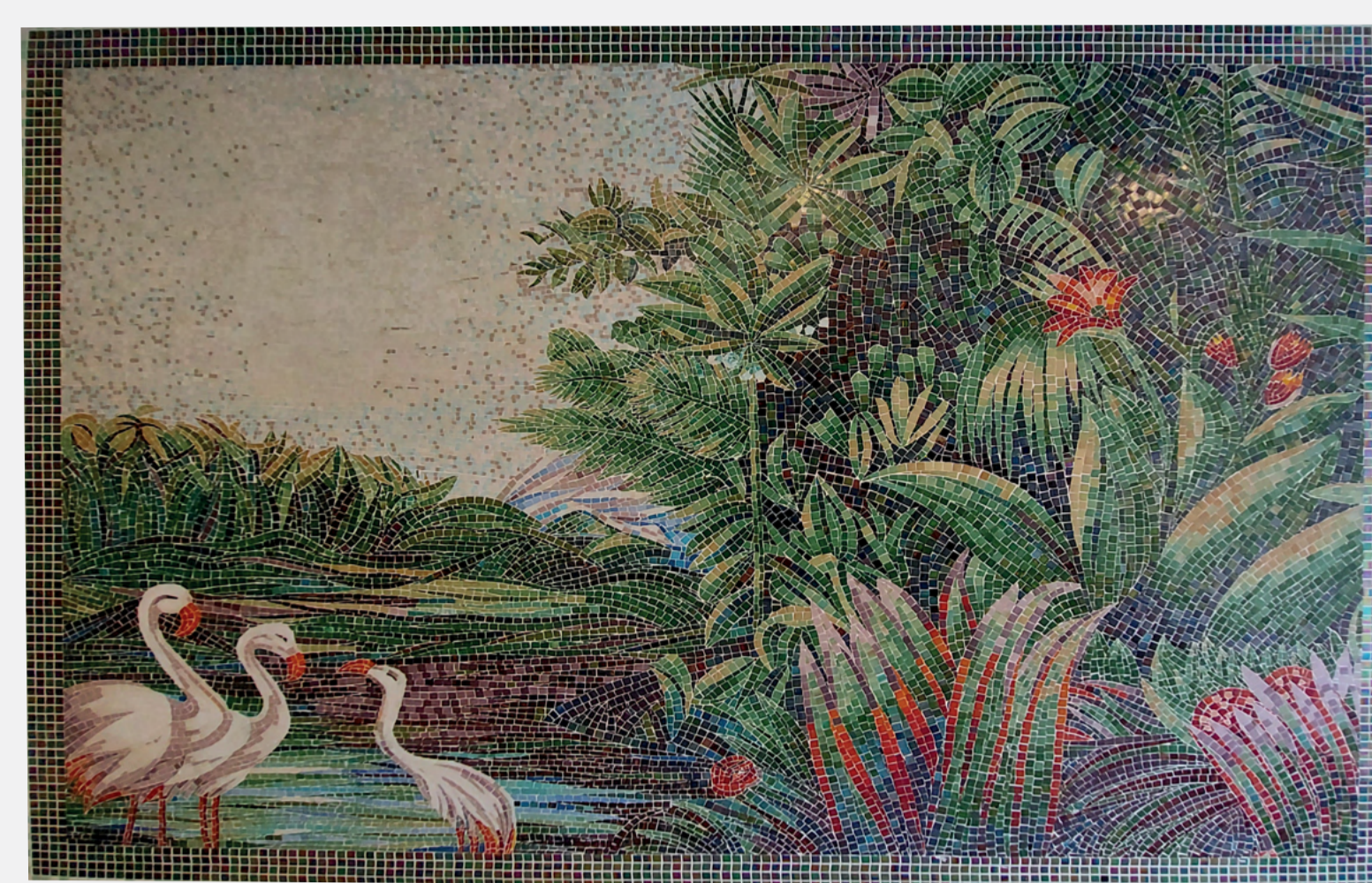
Kwun Lung Lau



觀龍樓顧名思意解作「觀龍的樓宇」，因為其樓宇布局正像臥龍一樣。電梯大堂牆上鑲嵌的一條可愛盤龍馬賽克是由建築師邁克爾·佩恩先生的妻子設計。觀龍樓於1967年建成，是香港房屋協會最早開發的公共房屋項目之一。Kwun Lung Lau literally means "Watching Dragon Building" as the block layout resembles a couching dragon. The lovely dragon mosaic at the lift lobby was designed by the wife of its architect, Mr Michael Payne. Built in 1967, it is one of the first public housing developments built by the Hong Kong Housing Society (HKHS).

西環邨

Sai Wan Estate



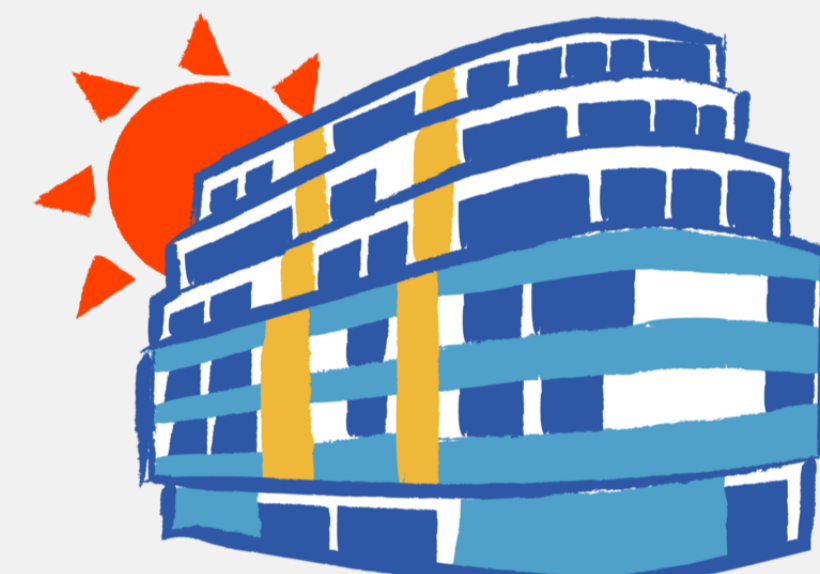
西環邨是香港最小及年紀最老的公屋邨之一，由香港房屋委員會興建。令人驚訝的是，1950年代的建築技術竟能成功克服於陡峭山坡上進行岩土工程的挑戰。在2000年代，屋邨內增加了更多康樂設施、綠化和共融設計。屋邨擁許多美學元素，包括於入口美麗的馬賽克。

It is the smallest and one of the oldest public housing estates built by the Hong Kong Housing Authority (HKHA). Amazingly, it was built into a hillside, overcoming geotechnical challenges, back in the 1950s. More recreational facilities, greening and inclusive design were added to the Estate in the 2000s. The Estate embraces many aesthetic elements including the beautiful mosaics at its doorstep.



美新大廈

May Sun Building



位於士美菲路1-15號的美新大廈建於1964年。它擁有斜樓頂的建築特色，反映當時的建築規範，主要是基於環境衛生方面的考慮，讓更多陽光滲透屋內。

The building located at 1-15 Smithfield was built in 1964. It is characterised by a slanted top, which reflected the practice to "set back" the top stories of buildings in compliance with the building codes of the time. This was basically to allow sunlight penetration for sanitation reasons.



● 公共空間 Public Areas

科士街樹牆 臨時遊樂場

Forbes Street Temporary Sitting-out Area



走上堅尼地城港鐵站C出口旁的樓梯，你的目光會被科士街臨時遊樂場的石牆迷住。如1889年的堅尼地城地圖所顯示，該區曾經容納了屠房、羊房和豬房。至今，你仍然可以看到焚化爐焚燒動物屍體的痕跡。在成為屠房之前，該地區毗鄰是玻璃及繩索廠地及瘟疫醫院。現在，科士街臨時遊樂場已成為眾人喜愛的熱點，提供進行球類運動的場所，也是生態、歷史文化和石牆觀光圈的著名景點，吸引人們到此自拍及取景拍攝。

Right next to Exit C of Kennedy Town MTR Station, your eyeballs will be attracted by the beautiful stone wall trees at Forbes Street Temporary Playground. As shown on the 1889 Kennedy Town Map, the area used to accommodate a slaughterhouse as well as sheep and pig depots. You can still see the relics of the incinerators for burying animal corpses. Before functioning as the slaughterhouse, the precinct was a glass and rope factory compound and a plague hospital. Nowadays, the Forbes Street Temporary Playground is a popular place for everyone, offering a famous spot for ball games; ecological, heritage and masonry tours; selfies and filming.

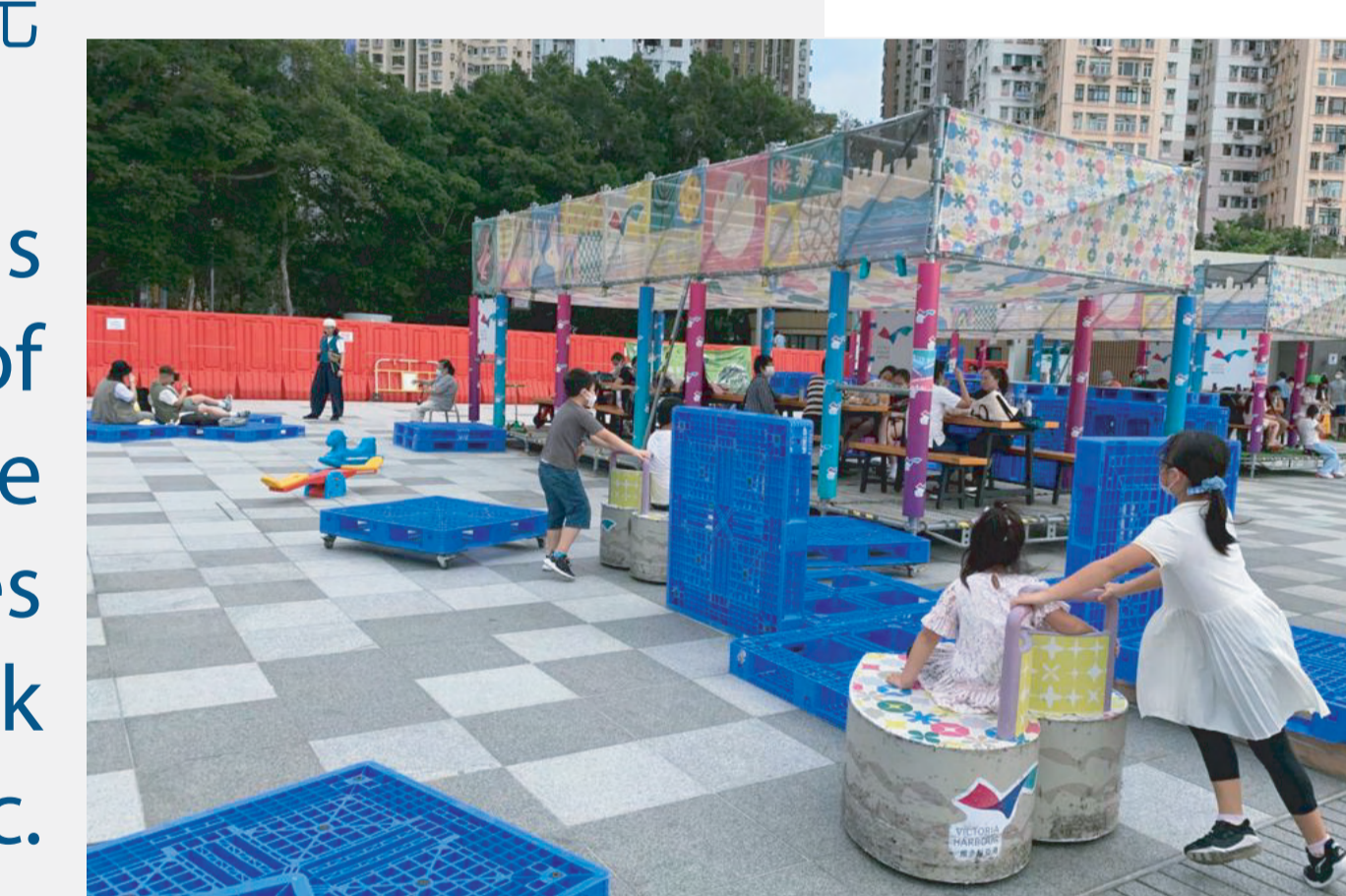
卑路乍灣海濱長廊

Belcher Bay Promenade



士美菲路一帶的海濱，是舊日維港填海原有邊界的標記，卑路乍灣海濱長廊與此毗鄰。這裏配有多功能空間、木板路、日光浴平台長椅、寵物公園、社區農圃等。

The seaside of Smithfield marks the remains of the original reclamation boundary of Victoria Harbour, which intersects with the Belcher Bay Promenade. It features multi-purpose spaces, boardwalks, sundeck benches, pet garden, community farms, etc.



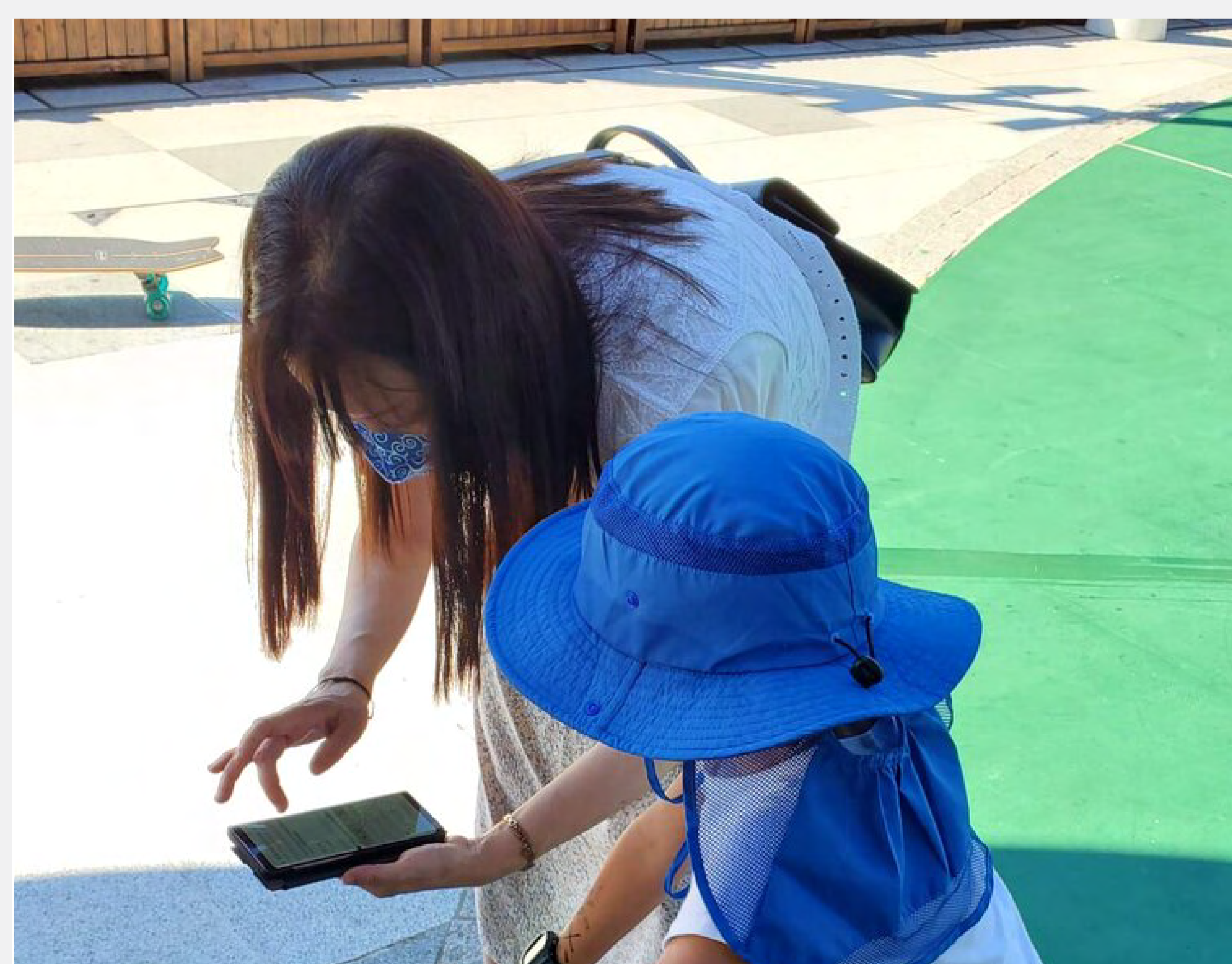
士美菲路休憩處

Smithfield Sitting-out Area



士美菲路休憩處位於堅尼地城港鐵站B出口。休憩處由多層平台組成，可經電梯或樓梯直達。休憩用地為人們提供喘息空間及多功能空間進行各種類型的活動。那裏偶爾也會舉辦一些文化活動。

The Smithfield Sitting-out Area is located at Exit B of Kennedy Town MTR Station. The sitting-out area comprises platforms accessible by a lift or stairs. The open spaces provide breathing spaces and multi-purpose areas for people to use them in various ways. It is also a venue for occasional cultural events.



Site Survey for Smithfield Playground @ Aug 2021

